

Twin Oaks Medical Centre & Park View Surgery

2012 NEWSLETTER

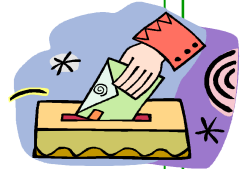
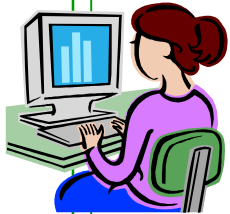
THE NEW PATIENT PARTICIPATION GROUP

Would you like to give your opinions about the services provided at Twin Oaks Medical Centre and/or Park View Surgery? We would like to hear your views, and give you a greater say on what happens in the Surgeries, to help improve the quality of healthcare and other services provided to our patients.

We are in the process of setting up a new Patient Participation Group, and our aim is to get a truly representative group of patients, so if you are young, old, or in between, have a long term medical condition and visit the surgery regularly, are usually fit and well and only attend very occasionally, or you are a parent of young children, or disabled in any way, we would ask that you join this new group. We would welcome any patient to join the group.

By agreeing to become a member, we will add you to our Patient Participation Group and contact you on an occasional basis to ask you a few questions about the Surgery. We would prefer to do this via email, but if you do not have access to a computer you can still be part of the Patient Participation Group and we will contact you by telephone or post.

If you would like to become a member of the Patient Participation Group, click on the Patient Participation link on our website www.twinoaksmedicalcentre.co.uk or pick up a Patient Participation Group application form from reception at either Twin Oaks Medical Centre or Park View Surgery.





CONSULTING TIMETABLE FOR BRANSGORE AND BURLEY

MONDAY

DR SAVAGE	9:00AM – 10:30AM 4:30PM – 6:00PM	BURLEY BRANSGORE
DR BOWRY	6:00PM – 7.30 PM	BRANSGORE
DR GEORGE	9:00AM – 10:30AM	BRANSGORE
DR SIMPSON	9:00AM – 10:30AM	BRANSGORE

TUESDAY

DR BOYD	7:30AM – 8:00 AM 9:00AM - 10:30AM 1:30PM – 2:30PM	BRANSGORE BRANSGORE BRANSGORE
DR GEORGE	9:00AM - 10:30AM 4:30PM – 6:00PM	BURLEY BRANSGORE

WEDNESDAY

DR SAVAGE	7:30AM – 9:00AM 1:30PM – 2:30PM	BRANSGORE BRANSGORE
DR BOWRY	9:00AM – 10:45AM 4:30PM – 6:00PM	BURLEY BRANSGORE

THURSDAY

DR SAVAGE	9:00AM – 10:30AM	BRANSGORE
DR BOWRY	9:00AM – 10:45AM 1:30PM – 2:30PM	BRANSGORE BRANSGORE
DR SIMPSON	9:00AM - 10:30AM 4:30PM – 6:00PM	BURLEY BRANSGORE

FRIDAY

DR BOYD (3 weeks in 5)	9:00AM – 10:30AM	BURLEY
DR BOWRY (1 week in 5)	9:00AM – 10:30AM	BURLEY
DR SIMPSON (1 week in 5)	9:00AM – 10:30AM	BURLEY

ALL DOCTORS WILL WORK ON A ROTA BASIS

9:00AM – 10:30AM &
4:30PM – 6:00PM BRANSGORE

USEFUL TELEPHONE NUMBERS

HOSPITALS

Royal Bournemouth	01202 303626
Christchurch	01202 486361
Poole General	01202 665511
Southampton General	02380 777222
Royal South Hants	02380 634288
Salisbury District	01722 336262

CHEMISTS

Boots Bransgore	01425 672511
Boots Lymington	01590 673097
Boots Christchurch	01202 483034
Boots New Milton	01425 610359
Boots Ringwood	01425 474170
Lloyds Highcliffe	01425 274291
Lloyds New Milton	01425 619911
Lloyds Ringwood	01425 474196
Sainsburys Christchurch	01425 280917

OPTICIAN

Nicholsons	01425 673343
------------	--------------

*Hampshire Dental Helpline and
Emergency Helpline* 0845 050 8345

CITIZEN'S ADVICE BUREAU

Consultations are available with an advisor on the first Monday of every month from 2pm onwards. Please contact our reception on 01425 672741 to make an appointment.

Helpful Information when surgery is closed :

Out of Hours Service 0300 300 2012

If you have a less urgent medical enquiry call:

NHS Direct **0845 4647**



If you have suffered a minor injury which is not an emergency, you can visit:

**The Minor Injuries Unit at Lymington New Forest Hospital,
Wellworthy Road, Lymington, Hampshire SO41 8QD.**

Tel: 01590 663101. Open from 8am-9pm, 7 days a week, all year.